

# *Inside*

for Musik Fabrik with Harry Partch instruments  
and "Ameublement de Musique" No. 2, 3, 4

kuba krzewiński  
(2018)

score

*Project co-financed by the Adam Mickiewicz Institute Poland*

Date of origin of the work: 2.01.2018

First performance: 5.02.2018, Cologne, musikFabrik Studio

Duration: ca 9'20"

Scoring:

Harry Partch instruments:

Castor and Pollux  
Blue Rainbow  
Chromatic (Harmonic) Canon  
Surrogate Kithara  
Adapted Viola  
Chromolodeon I  
Marimba Eroica  
Cloud-Chamber Bowls  
Bloboy

Crotales

3 "Ameublement de musique" objects



**Instruments + accessories:**

Castor and Pollux [Axel] + bow, small superball mallet

Blue Rainbow [Dirk W] + pyrex rod, bow, small superball mallet

Chromatic (Harmonic) Canon, Bloboy [Carl] + bow, reibenstock, small superball mallet

Adapted Viola, Surrogate Kithara [Hannah] + bow, reibenstock

Chromolodeon I, Bloboy [Uli]

Marimba Eroica, Crotales [Dirk R] Crotales - pitches  $\sharp d^3$ ,  $a^3$ ,  $h^3$  + bow, big soft mallets (for Eroica)

Cloud-Chamber Bowls [2 performers: Christine, Helen] + 2 reibenst., 4 soft mallets

3 "Ameublement de musique" objects - functioning as a quasi tape

Piece should be performed with "click" in conductor's ear.

**Tuning and Notation of the Instruments:**

Castor and Pollux  
[C]

[P]

Musical notation for Castor and Pollux. The notation is split across two staves. The first staff has notes with fingerings 1, 2, 3, 4. The second staff has notes with fingerings 1, 2, 3, 4, 1, 2, 3, 4, 1, 2, 3, 4.

Blue Rainbow  
[L]

[R]

Musical notation for Blue Rainbow. The notation is split across two staves. The first staff has notes with fingerings 1, 2, 3, 4. The second staff has notes with fingerings 1, 2, 3, 4, 1, 2, 3, 4, 1, 2, 3, 4.

Chromatic Canon

Musical notation for Chromatic Canon. The notation is on a single staff with notes 1 and 44.

Surrogate Kithara

Green

Musical notation for Surrogate Kithara Green. The notation is split across two staves. The first staff is labeled 'Sounding' and the second staff is labeled 'Notation' with fingerings 1 through 9.

Orange

Musical notation for Surrogate Kithara Orange. The notation is split across two staves. The first staff is labeled 'Sounding' and the second staff is labeled 'Notation' with fingerings 1 through 8.

Adapted Viola Scordatura (notated as it sounds)

C d a e<sup>1</sup>

Chromolodeon I - notated with classical key notation and a fraction, e.g.:

Musical notation for Chromolodeon I. The notation is on a single staff with a fraction  $\frac{14}{11}$  and a note 7.

Marimba Eroica

Musical notation for Marimba Eroica. The notation is on a single staff with notes 8<sup>wa</sup> and 11.

Cloud-Chamber Bowls

Musical notation for Cloud-Chamber Bowls. The notation is on a single staff with notes 41, 42, 31, 32, 33, 34, 21, 22, 23, 11, 12, 23, 24.

### Additional information:

Marimba Eroica - Contact microphone:

There is a contact microphone (provided by the composer) on Marimba Eroica lower "bar". Tapping on it is processed electronically and produces bass sound causing the foil of "Ameublement de musique" objects to tremble.

Bloboy - Tactile Sensors:

There are tactile sensors installed on Bloboy which are connected with fans inside the objects.

Blue Rainbow, Surrogate Kithara - Bowhair:

There is loose bowhair (provided by composer) installed under following strings, that ②③rmers pull (similarly to a bow although with two hands) in certain moments.

Castor & Pollux - [C] 1; [C] 2, Blue Rainbow - L [2], Chromatic - 1-8, Surrogate Kithara -

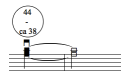
### Special Marks:



- long ricochet (between irregular ricochet / down-bow staccato)



- free ricochet



- play bow on several strings at a time (e.g. Chromatic Canon), consult Video 1



- tip of the bow gliss., consult Video 1

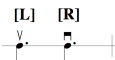


- tip of the bow - same string gliss., consult Video 1



- Superball "whale", consult Video 3

Bloboy Sensors (installed on Bloboy)



- press sensors (with a foot) causing the fans to: [L] v suck the foil in ("inhale")

or [R] ▯ - expand the foil ("exhale")

### Video and Audio examples

In order to obtain Video and Audio examples/explanations necessary to execute some techniques in the score, please contact the composer: [kubakrzewinski@gmail.com](mailto:kubakrzewinski@gmail.com)

Video 1 - refers to all Canons and Surrogate Chitara, e.g. Chromatic Canon - 135 measure

Video 2 - refers to Blue Rainbow and Surrogate Kith. e.g. Surrogate Kithara - measure 117

Video 3 - refers to Blue Rainbow and Castor and Pollux, e.g. C&P - measure 147

Audio 1 - refers to Blue Rainbow and Castor and Pollux, e.g. Blue Rainbow - measure 11

Audio 2 - refers to Blue Rainbow, Castor and Pollux and Adapted Viola, e.g. C&P - measure 19

Audio 3 - refers to Surrogate Kithara, e.g. measure 138

Audio 4 - refers to Surrogate Kithara, e.g. measure 90

Other techniques are explained directly in the score.

### Ameublement de Musique objects

AdM is a series of sound installation objects that I have been working on since 2016. They have been presented in various forms: installation, performative concert, piece on various occasions in Belgium, Germany, Netherlands and Poland.

Primarily they consist of bass and high-tone speakers hidden in the wooden frame and covered with a thermal foil blanket. Bass speakers vibrations make the foil tremble and therefore literally show the tactile qualities of sound. In some of the performances they are also connected to sensors and are interactive for the audience.

In this particular piece - firstly they serve to play the electroacoustic layer, secondly their tactile qualities correspond with the tactility within Partch's instrumentarium and lastly - there are fans (ventilators) hidden inside of them - which are automated (by sensors placed on Bloboy) in some moments of the piece and make the foil enlarge creating an additional visual effect.

Score

ca 9'20"  
Version 2,01.

# Inside A

♩ = 60

Castor and Pollux Axel

Blue Rainbow Dirk W

Chromatic Canon Carl

Surrogate Kithara Adapted Viola Hannah

Marimba Eroica Dirk R

Cloud-Chamber Bowls Christine

Cloud-Chamber Bowls 2 Helen

Chromolodeon Uli

Bloboy Benni

Ameublement de musique (all three) Spectrogram

5 10 [C]1 15 bow hair

fingers [L]1 r.h. ↓ ↓ ↓ ↓ simile

p l.h. slide down the 8 strings alternately with r.h. and l.h. with one finger (middle) in order to create a drony sound

pp mp

ca 6 ca 6 ca 6 ca 6 ca 6 ca 6 ca 6 ca 6 ca 6 ca 6

pp p pp p pp p pp p pp p

tapping on Marimba Eroica bar is processed electronically and produces bass sound causing the foil of AdM objects to tremble

[Subbas]

ppp ppp

8<sup>va</sup> air sound by barely gradually transforming depressing the note (by adding pressure) to a very airy note and back



\* tapping on Marimba Eroica bar is processed electronically and produces bass sound causing the foil of AdM objects to tremble

19 20 bow hair 25 30 bow hair

C&P Axel *pp* *mp* *pp* *mp* *pp* *mp*

Blue Dirk W [L] 2 bow hair bow hair bow hair *pp* *mp* *pp* *mp* *pp* *mp*

Chromat. Carl Reibenst.\* next to pegs finger *p* *ca* 15 *ca* 13 *ca* 12 \* rub reibenstock on strings next to left pegs \* harmonic gliss.

Sur./Vla Hannah [Orange] 3 2 bow hair bow hair *pp* *mp* *pp* *mp*

Ero. Dirk R 6 *ca* 6 6 *ca* 6 6 *ca* 6 6 *pp* *p* *pp* *p* *pp* *p*

Clouds 1 Christine soft mallet 21 22 simile *pp* one-hand, one-mallet tremolo (between)

Clouds 2 Helen 34 Reibenst.\* *p* \* rub reibenstock on the edge of cloud-chamber bowl 34 Reibenst. *p*

Chromo. Uli *ppp* *ppp* *pp*

Bloboy Benni

AdM

35 bow hair *pp* < *mp*

40 bow hair *pp* < *mp*

[C]1 arco Ord. 45 SP ASP

50 Superball next to pegs *mp*

[P]1 SP *p*

\* long ricochet (bow should be played on all 8 strings between irregular ricochet / down-bow staccato) (Consult Audio 2)

[L]4 r.h. *p* L.h. fingers

[L]1 arco SP

\* long ricochet (bow should be played on all 8 strings between irregular ricochet / down-bow staccato) (Consult Audio 2)

23 1 8 bow hair *pp* < *mp*

1 8 bow hair *pp* < *mp*

1 8 bow hair *pp* < *mp*

Superball next to pegs *mp*

Reibenst. next to pegs *p*

23 23 1 ca 15 \* harmonic gliss.

Sur./Vla Hannah bow hair *pp* < *mp* bow hair *pp* < *mp* [Viola] arco SP SP *p* \* long ricochet (between irregular ricochet / down-bow staccato) (Consult Audio 2)

Ero. Dirk R 6 6 *pp* 6 6 *pp*

Clouds 1 Christine 21 Reibenst.\* *p* 15 Reibenst. *p* \* rub reibenstock on the edge of cloud-chamber bowl

Clouds 2 Helen 22 Reibenst. *p* 22 Reibenst. *p*

Chromo. Uli *ppp* *ppp* *ppp* *ppp*

Bloboy Benni

AdM

56

55 SP ASP (similar to Video 1) SP 60 Superball next to pegs SP 65 ASP [C] 2 bow hair 70 bow hair 75

C&P Axel *pp* *mp* *p* *pp < mp* *pp < mp*

"classical" bowing further on noted with ♯ for distinction tip of the bow (same pitch) gliss.

Blue Dirk W SP ASP ASP ASP ASP (similar to Video 1) SP Superball next to pegs *p*

"classical" bowing further on noted with ♯ for distinction tip of the bow (same pitch) gliss.

Chromat. Carl *p* (finger) Reibenst. next to pegs *p* ca 13 Reibenst. next to pegs *p*

Sur./Vla Hannah ASP SP SP SP ASP ASP

Ero. Dirk R *mp* *pp* *p* *pp* 6 6 *pp* 8

Clouds 1 Christine 21 22 12 13 21 Reibenst. *pp* *p* *p*

Clouds 2 Helen 13 Reibenst. 22 Reibenst. *p* *p*

Chromo. Uli 14 15 16 17 18 19 20 21 22 *mp* *mp* *mp*

Bloboy Benni

AdM



80

76

C&P Axel

Blue Dirk W

Chromat. Carl

Sur./Vla Hannah

Ero. Dirk R

Clouds 1 Christine

Clouds 2 Helen

Chromo. Uli

Bloboy Benni

AdM

SP ASP p mp mf sfz arco SP SP 90 SP ASP

Superball next to pegs 85

tip of the bow (same pitch) gliss.

free ricochet

[L]1 [L]2 [L]4

arco SP ASP SP ASP SP ASP SP ASP

free ricochet

plect. 1 23 1 23 44

Reibenst. next to pegs

arco 11 1 ASP \* 11 1 ASP \* 1

\* play bow on strings nr 1-11 at a time (similar to Video 1)

\* tip of the bow gliss. (similar to Video 1)

ASP ASP ASP ASP ASP [Surrogate] arco 8 ASP \* 1 ASP \*

\*consult Audio 4

pp mp p

Reibenst. 13 Reibenst. 13 21 22

Reibenst. 14 Reibenst. 14

mf mf

95 **[P]4** ASP SP SP 100 **[C]3** SP SP 105 **[P]4** **[C]4** plect. arco ASP 110 **[C]3** SP

C&P Axel *p* < *mf* > *p* *mf* *mp* < *f* > *mp* *p* < *mf* > *mf* *p* < *f* > *mp* < *f* > *mp* *mp*

Blue Dirk W ASP SP SP **[L]4** ASP SP ASP SP **[L]1** ASP plect.

Blue Dirk W *p* < *mf* > *mp* *p* < *mf* > *p* < *mf* > *mp* *mf* *mp* < *f* > *mp* *p* < *f* >

Chromat. Carl 11 1 ASP 1 Pyrex Rod next to pegs plect. 23 1 23 1 44 44 ca 38 15 ASP 1

Chromat. Carl *p* < *mf* > < *mf* > *mf* *mp* < *mf* > *mp* < *mf* >

Sur./Vla Hannah ASP Reibenst. arco ASP ASP ASP ASP ASP ASP ASP

Sur./Vla Hannah *p* < *mf* > *p* < *mf* > *sfz* *p* < *mf* > *sfz* *p* < *mf* > *sfz* *p* < *mf* > *sfz*

Ero. Dirk R *pp* *mp* *pp* soft mallets *mp* < *p* > *mf* *p* *mf* *p* *mf* *mp*

Clouds 1 Christine 18 18 18 18 41 42 6 18 18 18 18 18 18 18 18 *mf* < *p* > *mf* *mp* < *mf* > *mp* < *mf* >

Clouds 2 Helen 31 32 simile *mp* < *mf* > *p* *mf* < *p* >

Chromo. Uli *mf* *mf* *mf* *mf* *mf*

Bloboy Benni [R] [L] [R] [L] [R] [L] [R] [L] [R] [L] *mf* *mf* *mf*

Bloboy Benni press [L]eft or [R]ight sensor (with a foot) within pressing the sensors - Bloboy's bellows should be pressed everytime - but only slightly

AdM

112

C&P Axel

SP [P]4 arco SP 115 [C]4 ASP [C]4 ASP plect. arco [C]3 SP [C]4 ASP plect. bow-wiper\* [C]4

f sfz p mf mf f sfz p f f sfz p < f p < f

\* consult Video 2

Blue Dirk W

arco SP [L]4 plect. [L]4 plect. arco [L]1 ASP plect. arco [L]4 plect. arco [L]1 ASP

sfz p < f p < f p < f p < f p < f

plectrum (same string) gliss.

Chromat. Carl

Pyrex Rod next to pegs plect. 1 23 1 23 44 ca 38 15 44 bow-wiper\* simile

mf f mp mf tip of the bow gliss. p f

\* consult Video 2

Sur./Vla Hannah

Reibenst. arco 8 bow-wiper\* simile 9 9 9 9 9 9

p f

\* consult Video 2

Ero. Dirk R

mf p f mp f mp ff

Clouds 1 Christine

18 18 18 mp 18 mf 18 18 p 18 18 18 mf

Clouds 2 Helen

21 22 mf pp mf p mf

Chromo. Uli

open Z open X [19] open P close X AR

mf f f

8<sup>va</sup> 4 9 8<sup>va</sup>

Bloboy Benni

[L] [L] [R] [L] [R] [L] [R] [L]

AdM

**D**

Inside

**[C] 2** \*  
Superball "whales"

\* slowly slide Superball between two strings producing a wavy reverberation consult Video 3

C&P Axel *f* simile 125 130 135 140 145

Blue Dirk W arco bow-wiper \* simile [L] 4 *p* tip of bow *p* [L] 4

Chromat. Carl arco *p* 44 - ca 38 \* 44 - ca 38 44 - ca 38 44 - ca 38 \* play bow on the highest strings left from the bridge, consult Video 1

Sur./Vla Hannah arco SP *pp* *p* *pp* *p* *pp* *p* 8 - 3 mute two lowest strings (with lh. thumb) press slightly the highest string in its 1/3 to create a harmonic

Ero. Dirk R [Crotale] arco *p* *mf* *p* *mf* *p* *mf* *p* *mf* *p* *mf*

Clouds 1 Christine arco 21 *mf*

Clouds 2 Helen arco 22 *mf*

Chromo. Uli close (P) (Z) open (AR) metal tube metal tube metal tube [L] 7 *mp*

Bloboy Benni metal tube metal tube metal tube

AdM

162

[P]4

150 155 160 165 plect

C&P Axel

[L]4 bow-wiper

Blue Dirk W

Pyrex Rod next to pegs

tip of bow

Chromat. Carl

finger ca 23 ca 12 ca 15

arco

44 - ca 38

44 - ca 38

Sur./Vla Hannah

SP

pp

bow-wiper

8

Ero. Dirk R

[Eroica]

big soft mallets

6

[Crotale]

Clouds 1 Christine

23

mf

21

mf

Clouds 2 Helen

22

mf

34 Reibenst.

arco

23

mf

Chromo. Uli

metal tube

metal tube

metal tube

metal tube

mp

Bloboy Benni

metal tube

metal tube

metal tube

AdM

**[C]2 Superball "whales"**  
166 170 175 180 185

C&P Axel

Blue Dirk W  
plect. **[L]2\* Superball "whales"**  
*p*  
\* slowly slide Superball between two strings producing a wavy reverberation consult Video 3

Chromat. Carl  
finger  
ca (C) (23) ca (C) (23) ca (C) (23)

Sur./Vla Hannah  
SP *pp* < *p* SP *pp* < *p*

Ero. Dirk R  
[Eroica] big soft mallets  
*mf* *p* < *mf* *p* < *mf* *pp* 6 6

Clouds 1 Christine  
(22) < *mf*

Clouds 2 Helen  
(13) Reibenst. < *p*

Chromo. Uli  
(13) (14) (14) (14) *mp* metal tube metal tube metal tube

Bloboy Benni  
metal tube metal tube metal tube

AdM